

Road Tunnel Uetlibergtunnel

Zurich, Switzerland

Juchegg Soft Ground Section

Object

National highway tunnel, new construction

Construction Costs

Total costs Uetliberg tunnel: CHF 1'120 million

Project Schedule

Planning: since 1981
Construction duration: October 2001 - August 2004

Project Description

2-tube tunnel: each tube with 2 traffic lanes and one shoulder.

Length Juchegg SGS: approx. 410 m
Diameter: 12.70-14.70 m
Cross section: approx. 148 m²
Slope: 1.6 % (upward)

Driving Method

Driven upward by core boring with steel installation and pipe screen system.

Geology

A base moraine composed initially of sandy-gravels and then of clay-sands. Above it lies the Uetliberg loam.

Construction Details

- The excavation support consists of steel segments and 25 cm steel-fibre reinforced shotcrete layers
- In the first 70 m of tunnel heading, a pipe screen system will be installed to cross the Uetliberg loam
- Waterproofing with plastic membrane
- Cast concrete final lining

Our Services

- Complete detail and construction design, tender documents of the underground works
- Partial design of the cut-and-cover sections
- On-site construction management for underground construction
- Support project management of client

Client

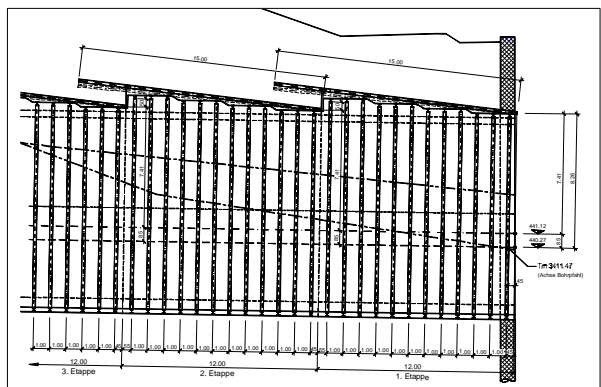
Tiefbauamt des Kantons Zürich, Mr. O. Schnell

Amberg Engineering AG
Trockenloostrasse 21
CH-8105 Regensdorf
Telefon +41 1 870 91 11
Telefax +41 1 870 06 20
info@amberg.ch
www.amberg.ch

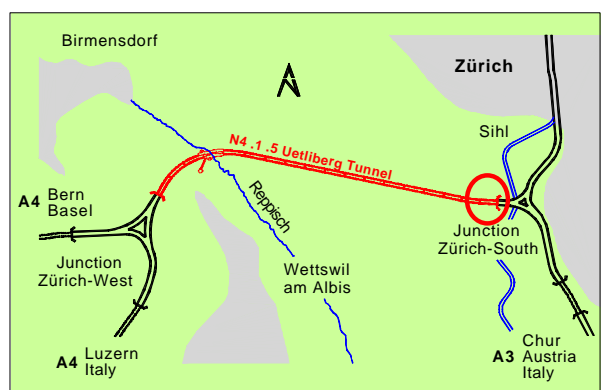
Niederlassungen in:
Sargans
Chur
Brünn, CS
Singapur, SG
Madrid, ES



Pipe screen



Pipe screen system and steel installation to cross the Uetliberg loam



Site plan

For further information:

www.uetlibergtunnel.ch

